



# ST. LEO THE GREAT CATHOLIC CHURCH

710 S. 13<sup>th</sup> Street, Tacoma, WA 98405 | (253) 272-5136

STRIVE TO ENTER  
THROUGH THE  
NARROW GATE

Luke 12:35

AUGUST 24, 2025

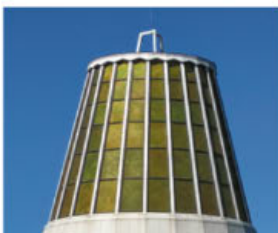
*Twentyfirst Sunday in Ordinary Time*

## LITURGY SCHEDULE



### St. Leo

- Saturday Vigil 5pm
- Sunday 10am
- 4<sup>th</sup> Sunday Kateri Circle Mass 1:30pm
- Tuesday, Thursday, Friday 12:10pm
- Sacrament of Reconciliation: Saturdays 4-4:30pm



### St. Charles

- Saturday Vigil 5pm
- Sunday 8am, 10am (livestreamed), Noon
- Daily Mass: Monday through Friday 9am
- Eucharistic Adoration: Fridays 9:30am-4pm
- Sacrament of Reconciliation: Saturdays 3-4pm

# Reminders

If you would like to add someone to our prayer list, please contact [pastoralministries@stleoparish.org](mailto:pastoralministries@stleoparish.org)

St. Leo Parish is a welcoming place for the LGBTQA community

Para información en Español, por favor llame al teléfono (253) 272-5136

Just a reminder: If you have an item for the bulletin please send it to [bulletin@stleoparish.org](mailto:bulletin@stleoparish.org) **no later than Wednesday at noon**

## St. Leo

...a Catholic community centered in the Eucharist, enriched by diversity, committed to Gospel values, and continually seeking to be Christ's servant presence in the world.

## Stay Informed

Check all our SLP media channels!

### Website

Main communication channel: Website [stleoparish.org](http://stleoparish.org)

### Facebook

Several posts every week with season reflections and more  
<https://www.facebook.com/StLeoParishTacoma>

### eNewsFlash

Weekly newsletter with upcoming events & information

Sign up on our website or scroll down to the bottom of any page





# A Message from Father Michael

Last week, our pastoral staff went on retreat with three goals: 1) increase our openness to the Holy Spirit, 2) strengthen our relationship with one another and 3) grow in our ability to serve our parish family of St. Leo and St. Charles. It was such a good experience, I want to share it with you.

We started by reflecting on the Church's teachings about the importance of helping the faithful to grow in their ability to live out the call they received in Baptism to share in the ministry of Christ. The only way that we can serve the tens of thousands of people in our parish boundary, is if each of us answers our call from Jesus sharing the Gospel with our family, neighbors and community.

We then listened to each other and appreciated the gifts and experiences of our parish staff. We are truly blessed to have this team. This faithful, talented and enjoyable group is committed to responding to the challenges coming our way.

We also reflected on how the Church calls us to recognize the joys, griefs, hopes and fears of our parish community as the joys, griefs, hopes and fears of Christ (*Gaudium et Spes* 1). I know the changes of this last year have been big. The Jesuits cared for St. Leo for 100+ years. Fr. Mike shepherded St. Charles for 24 years. Neither of our parishes expected to be joined together as a parish family. It's natural that those changes would cause grief.

It's also natural to have anxiety. Will we have enough vocations to the priesthood for the future? Will we lose what we love about our parishes? Will our children keep the faith?

But we found the joys and hopes spoke so much more powerfully to us. Joy from the children gathering at the altar at the Sunday Masses. Joy from the encounter with God in creation our youth group experienced on our Youth Pilgrimages this summer. And joy from the new families joining our parish.

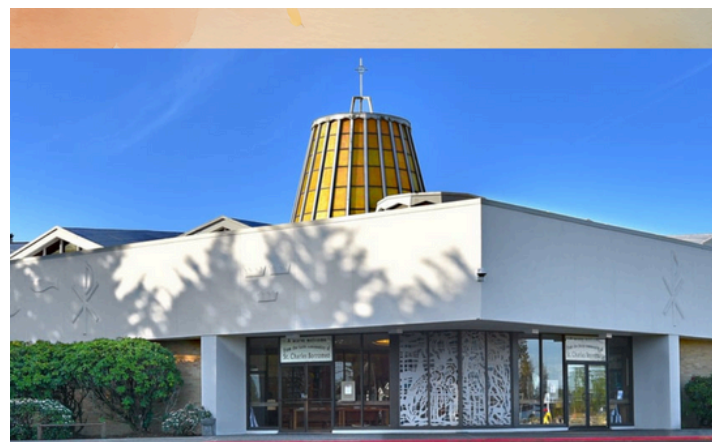
We see many signs of hope too. Mercy 253, a St. Charles ministry to the poor, is already exploring ways to grow this ministry, as well as minister to the poor amongst the St. Leo campus. Our Young Adult ministry is taking off in new ways and responding to an emerging hunger for faith among our young people. The Holy Spirit is working in our community and it is a joy to be part of that work.

Thank you for your support of our wonderful parish staff.  
We look forward to serving you in this year to come!

## Middle School Youth Group

St. Patrick, St. Leo, and St. Charles are joining forces for a Middle School Youth Group. Want to help guide our youth in faith and fellowship? Come to the Youth Group Leader Meeting on August 31st, 4:45 to 6:30 PM at the St. Patrick Parish Center.

\* Parents of youth in grades 6–8: Please attend a meeting on September 14th, 4:45 to 6:30 PM at the St. Patrick Parish Center to learn more about what Youth Group is, dinner will be provided.



**September 7, 2025**  
**12:00 mass turns into 12:30 mass**  
**at St. Charles Borromeo**

## UPCOMING EVENTS

August 23/24

21st Sunday in ordinary time  
Vigil Mass 5pm, Mass 10am,  
Native American Mass 1:30pm

August 26, 28, 29

Daily Mass 12:10pm

August 29

Family Karaoke Night

August 30

Confessions 4pm  
Vigil Mass 5pm

## 2025 Fundraiser



September 26<sup>th</sup>, 2025

6:30pm

Bichsel Hall, St. Leo Parish  
710 S 13th St, Tacoma

Share hors d'oeuvres and wine with friends  
old and new and help us further our mission:

**"To ensure that everybody  
has access to health care."**

**\$50/ticket**

(Tickets available online  
or at the door)

[neighborhoodclinetacoma.org/fundraiser](https://neighborhoodclinetacoma.org/fundraiser)



## Family Reconciliation

GO TO CONFESSION, GET A POPSICLE

ST. CHARLES 9/2/25 5:30-6:30 PM

SPONSORED BY  
THE KNIGHTS OF COLUMBUS

## WE PRAY FOR...



The sick:

Preston Umipeg  
Mara Eaton

The deceased:

Ferruccio Crocetti

If your loved one is facing surgery or has a chronic health condition, they can receive the sacramental Anointing of the Sick after any Mass. Just notify the priest of this need either before or after Mass.

*Eternal rest grant unto them, O Lord, and let perpetual light shine upon them.*



# Join us! Karaoke

PARENTS & KIDS' KARAOKE  
NIGHT



**AUGUST 29  
FRIDAY**  
KARAOKE STARTS AT  
**6:00 PM**  
FOOD WILL BE  
PROVIDED

AGES 6 YRS OLD AND UP  
PARENTS ARE INVITED AS  
WELL!

ST. LEO THE GREAT  
710 S. 13<sup>TH</sup> ST, TACOMA, WA, 98405

An annual summer event by St. Leo the Great and St. Charles Borromeo



## KNIGHTS OF COLUMBUS

Council #13238  
of St. Charles Borromeo  
Hosting

## Mexican Martyrs Relics

Wednesday September 3, 2025

St. Charles Mass 9 am

St. Leo 6 pm

Adoration, Litany of the Saints, and Rosary  
Light Reception to Follow

Conatet: [mmanning@stleoparish.org](mailto:mmanning@stleoparish.org)

Donate  
flowers to  
Beautify our  
Church

Drop off before  
Sunday masses  
to be used in  
arrangements  
for mass

CONATET:  
[mmanning@stleoparish.org](mailto:mmanning@stleoparish.org)

St. Leo  
TACOMA, WA



DONATE TO FLOWER FUND  
[HTTPS://PPAY.CO/FXRDK3LF-3Y](https://ppay.co/FXRDK3LF-3Y)



## Tahoma Pax Christi

All those yearning to set the world ablaze with peace  
are invited to the Tahoma Pax Christi meeting at 11:15  
on Sunday, August 24 in the Kateri Room in St. Leo  
Church.

Eternal wellspring of peace, may we be drenched with  
the longing for peace. May we give ourselves over to  
peace until the earth overflows with peace as living  
waters overflow the seas.





# SAN LEÓN MAGNO



## REGÍSTRATE AHORA

Las clases se imparten los domingos después de la misa.

**CLASE DE FORMACIÓN EN LA FE DESDE  
PREESCOLAR HASTA SEXTO GRADO**

**PREPARACIÓN PARA LA CONFIRMACIÓN  
7° A 12° GRADO**

**PREPARACIÓN SACRAMENTAL  
2DO GRADO A 6TO GRADO**

Comuníquese con Abby Díaz

[Faithformation@stleoparish.org](mailto:Faithformation@stleoparish.org)

[253.272.5136](tel:253.272.5136) ext. 106

# ST. LEO THE GREAT



## REGISTER NOW

Classes take place Sundays after Mass

**FAITH FORMATION CLASS  
PRE-K TO 6<sup>TH</sup> GRADE**

**CONFIRMATION PREP  
7<sup>TH</sup> TO 12<sup>TH</sup> GRADE**

**SACRAMENTAL PREP  
2<sup>ND</sup> GRADE TO 6<sup>TH</sup> GRADE**

Contact Abby Diaz

[Faithformation@stleoparish.org](mailto:Faithformation@stleoparish.org)

[253.272.5136](tel:253.272.5136) ext. 106



## CONFIRMATION

February 2026

# ADULT CONFIRMATION

If you are an adult in need of **First Holy Communion or Confirmation**, please connect to take the next steps!

CLASSES WILL BE ON  
SELECT DATES IN  
DECEMBER – FEBRUARY



Candyce Ochao  
cochoad@stcharlesb.org  
253-272-5136 ex:110

DETAILS ON THE  
REGISTRATION FORM



## OCCIA BECOMING CATHOLIC



If you are desiring to enter the Catholic Church, return to the Church, or just want to know more about Catholicism, **come join us!**

QR for  
Registration



Beginning  
September 28th



Candyce Ochao  
cochoad@stcharlesb.org  
253-272-5136 ex:110

St. Charles Borromeo  
St. Leo the Great

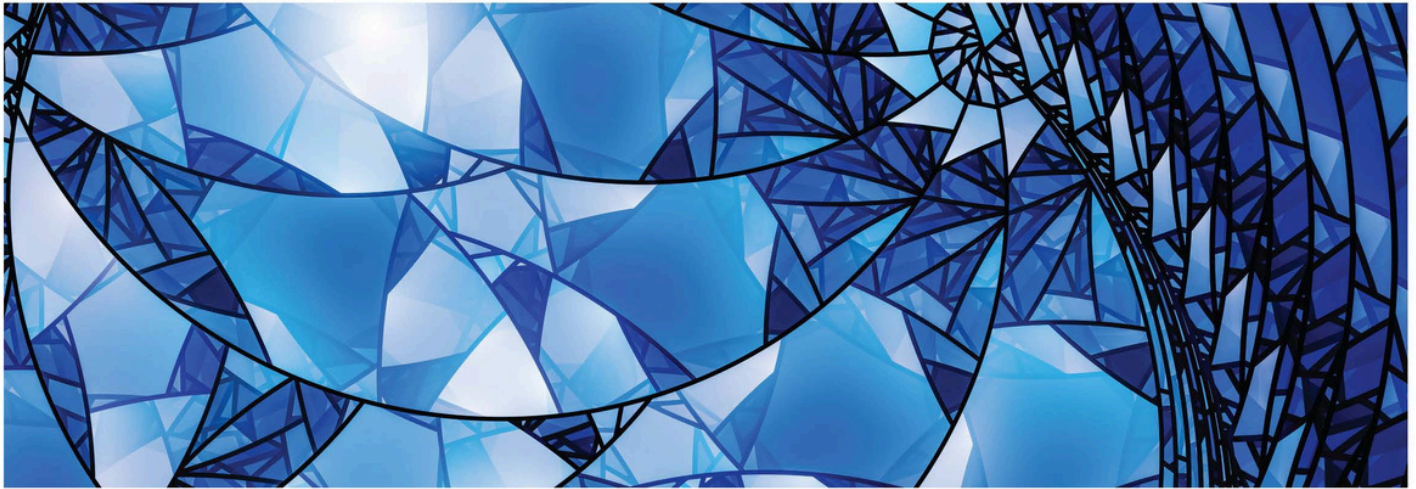


# *Breaking Open the Word*

## **THE IGNATIAN WAY**

Ministry formation programs for BIPOC and Young Adults

Rooted in the Spiritual Exercises of St. Ignatius, The Ignatian Way is a dual-track nine-month program that forms emerging leaders for public ministry in preaching and spiritual companionship, while nurturing care for the whole person with retreats and regular prayer.



### **IGNATIAN WAY PREACHERS**

The Ignatian Way Preachers program forms persons to break open the Word with imagination, justice, and spiritual depth. The process nurtures authentic, culturally relevant proclamation for today's diverse communities.

### **IGNATIAN WAY SPIRITUAL COMPANIONS**

The Ignatian Way Spiritual Companions program forms persons to listen, share the Word, and guide prayer in one-on-one and group settings. The process prepares them to guide others with authenticity, spiritual depth, and attention to God's movement.

### **PARTICIPANTS CAN EXPECT**

- Experiential learning of the Spiritual Exercises of St. Ignatius
- Care for the whole person through retreats, rest, and prayer
- One-on-one coaching (Preachers) or spiritual direction (Spiritual Companions)
- Enriched learning through small cohorts of diverse participants
- A funded year-end individual or team project
- Structured support for their ministry after the formation year

### **WHO SHOULD APPLY?**

The Ignatian Way formation programs are open to BIPOC and young adult individuals who are committed to sharing their faith with others: emerging leaders, lay ministers, pastors, teachers, spiritual directors, chaplains, and others who seek to deepen a call to ministry in their community.

### **LEARN MORE & APPLICATION**

**Applications are due August 30** Visit our website at [ignatiancenter.org/ignatian-way](https://www.ignatiancenter.org/ignatian-way) or contact Carla Orlando, Ignatian Way Program Manager, at [carla@ignatiancenter.org](mailto:carla@ignatiancenter.org).





## **St. Leo/St Charles Church**

### **Social Services/Justice – Parish Ministries**

#### **Jubilee Year Immigration Pilgrimage of Hope:**

On **Saturday, October 4th**, join Catholics from across Western Washington in a special Mass service and a pilgrimage to the ICE Processing Center in Tacoma to show solidarity and express hope and compassion for detainees and all immigrants. In the spirit of the Jubilee year of hope, Catholics throughout Western Washington are called to be pilgrims of hope. As part of Catholic social teaching, we express this hope by praying for, being in solidarity with, and showing compassion for immigrants.

We will be gathering at 9:30 am at St. Leo Church for opening remarks and instructions for the pilgrimage. The group then processes down to the Northwest Detention Center at 10:00 am. An outdoor mass will be celebrated outside of the detention center at 11:15am with the conclusion of the event at 12:15PM.

Van service will be provided for those who need transportation to and from the detention center.

**WE NEED VOLUNTEERS! If you are interested in volunteering for the event or would like more information, please contact Rick TEXT 253 229-4114.**

Also, if you plan to attend this event please register through the link below:

**Register Here: <https://archseattle.ccbchurch.com/goto/forms/5558/responses/new>**

#### **Moving Forward on organizing the works of Social Justice:**

##### **Food Justice Ministry**

Over the past year and a half, with the assistance of the Intercommunity Peace and Justice Center we have formed a core group of parishioners focused on addressing food insecurity in our community and the need to support our Food Bank and Food pantry miniseries:

- *Improve financial and in-kind support of our food bank and pantries*
- *Improve community outreach and networking within the food banking community and others to support the work*
- *Engage in effective legislative advocacy for food justice*
- *Educate and animate the parish family in the work of food justice*
- *Promote sustainable food production local food sourcing*

The core group will be meeting to discuss ways to organize and move forward on this work on

**Thursday, September 25<sup>th</sup> at 5:00pm meeting in Bix Hall on the St. Leo Campus.** To learn more about this vital work of social justice and expressing faith, please join us.

**For more information please reach out to Rick Samyn, VM or Text at: 253 229-4114 or leave an email at [larchelhoneybeekeeping@gmail.com](mailto:larchelhoneybeekeeping@gmail.com)**

#### **Social Supportive Services/St. Leo Campus**

On Thursday, September 11<sup>th</sup> our volunteers and staff will be meeting to discuss the work of this ministry with a focus on program expansion, greater outreach/collaboration with Catholic Community Services (CCS), financial support of the program and other program improvements. This is an energizing ministry with a direct positive impact on the community. Through the work of Social Supportive Services, the Clothing Boutique and Laundry Ministry we are the Face of Christ to those in

needs! The St. Leo Campus has always been a place of refuge to those who desperately need help and have nowhere else to go. We are the stable in Bethlehem, the outstretched hand to a wounded stranger on the road, the meal to a hungry stranger and clothing for the ill clad in a society of excess. The work of Social Supportive Services and its program are to be that Good News to a wounded and suffering world. We can and we do make a difference that is life giving, affirming of human dignity and give witness to the universal kinship that expressing God with Us!

**If you want to learn more of this positive and energize ministry, please join us on Thursday September 11<sup>th</sup> at 5:00pm Bix Hall/St. Leo Campus.**

**A story to share from this ministry: A Note from Dylan H.**

*I appreciate this so much (Regarding our laundry service). Little things like this make my life so much better! Thank you for recognizing the importance of dignity.”*

**The L'Honey Project: Musings from the Bee Yard**

We are in the middle of the queen release and treatment processes. This makes for long days. The queens can be released during the day but for optimal result on treatment, the colonies need to be medicated in the early hours of dawn before sunrise. It is a stressful time for the bees and the beekeeper. There are also risks. We have had two incidents so far that when I went to release the queen, I found her dead. A dead queen with no chance a raising a new queen can spell the death of the entire colony. Fast decisions must be made to save the colony. One option is to merge a queen-right colony with the one that lost their queen, and the other option is to purchase a queen and try to introduce her to the queen-less colony. I will be doing both.

So, what does this have to do with our faith? Well, from my perspective – everything!

**Genesis 2:15 “The LORD God then took the human and settled him in the garden of Eden, to cultivate and care for it.”** My true purpose, our purpose as humans, is to care for Creation. This is the Christian calling, which is just as important as loving your neighbor, living by forgiving and accepting that all things in heaven and Earth is God’s own.

So, when I care for the honeybees, I care for God’s own. Tending to the honeybees is sacrament as it is an outward sign or behavior that points to a deeper meaning or relationship. Tending to the needs of honeybees, like other relationships we have with the natural world can be that “touch stone” to a deeper understanding of the Divine. *The vestige of the Divine is infused in all of Creation and in our loving relationships with each other.*

**“The heavens declare the glory of God, and the sky above proclaim his handiwork” (Psalm 19:1).**

Rick  
Keeper of Bees





# Archdiocese of Seattle

## *Protect and Heal*

Anyone who has knowledge of sexual abuse or misconduct by a member of the clergy, an employee, or volunteer of the Archdiocese of Seattle is urged to call the archdiocesan helpline below. The Archdiocese of Seattle has a longstanding commitment to transparency, accountability, and assistance to persons sexually abused by clergy or by anyone working on behalf of the church.

Se insta a cualquier persona que tenga conocimiento de abuso sexual o conducta inapropiada por parte de un miembro del clero, empleado o voluntario de la Arquidiócesis de Seattle a llamar a la línea de ayuda arquidiocesana que aparece a continuación. La Arquidiócesis de Seattle mantiene un compromiso de larga data con la transparencia, la rendición de cuentas y la asistencia a las personas abusadas sexualmente por el clero o por cualquier persona que trabaje en nombre de la iglesia.

*"We acknowledge with gratitude and humility that St. Leo Parish is on the unceded territory of the Puyallup Tribe which our indigenous sisters and brothers have recognized as sacred and have cared for throughout the generations."*



## Staff

**Pastor: Fr. Michael Radermacher Ext. (114)**

**Parochial Vicar: Fr. Marc Powell Ext. (108)**  
[Fr.Marc@stleoparish.org](mailto:Fr.Marc@stleoparish.org)

**Deacon: Tom O'Loughlin Ext.(104)**  
[tomoloughlin@stleoparish.org](mailto:tomoloughlin@stleoparish.org)

**Pastoral Support: Eric Paige**  
[epaige@stleoparish.org](mailto:epaige@stleoparish.org)

**Food Connection Director: Dawn Whitman**  
253-361-9943 [dawnw@foodconnection.org](mailto:dawnw@foodconnection.org)

**Social Ministry and Facilities: Rick Samyn Ext.(102)**  
[socialministry@stleoparish.org](mailto:socialministry@stleoparish.org)

**Hispanic Ministries, Bautismo, 1st Communion: Abby Diaz**  
Ext. (118) [faithformation@stleoparish.org](mailto:faithformation@stleoparish.org)

**Sacramental Prep, Faith Formation Support: Amy Orm**  
[aorm@stleoparish.org](mailto:aorm@stleoparish.org)

**Young Adult Ministries, Becoming Catholic: Candyce Ochoa Ext (110)**  
[cochoa@stleoparish.org](mailto:cochoa@stleoparish.org)

**Weddings, Funerals, Liturgy & Partners in the Gospel Support:**  
**Marianne Manning Ext. (112)** [mmanning@stleoparish.org](mailto:mmanning@stleoparish.org)

**Pastoral Assistant of Music: Jina Darnell**  
[jdarnell@stleoparish.org](mailto:jdarnell@stleoparish.org)

**Operations Director: Shanon Koenen Ext. (109)**  
[skoenen@stleoparish.org](mailto:skoenen@stleoparish.org)

**Office Administrator: Angelie Ashford-White Ext. (115)**  
[aashford-white@stleoparish.org](mailto:aashford-white@stleoparish.org)

**Administrative Assistant: Lynda Sandschulte Ext. (103)**  
[lsandschulte@stleoparish.org](mailto:lsandschulte@stleoparish.org)

**Bookkeeper: Judith Lampthey Ext. (107)**  
[jlampthey@stleoparish.org](mailto:jlampthey@stleoparish.org)

**Food Connection Development Director: Kelly McDonald**  
[kellym@foodconnection.org](mailto:kellym@foodconnection.org)

**Sacramental Records: Mary Lou Morgan**  
[mlmorgan@stleoparish.org](mailto:mlmorgan@stleoparish.org)

**Maintenance: Johnnie Mariano Ext. (105)**  
[jmariano@stleoparish.org](mailto:jmariano@stleoparish.org)

**Bichsel Hall Coordinator: Nancy Maggart**  
[bixcoordinator@stleoparish.org](mailto:bixcoordinator@stleoparish.org)

**Prayerline - Mary Ann Seiwerath: 253-241-6290**  
[maseiwerath@gmail.com](mailto:maseiwerath@gmail.com)

**Homebound Ministry- Rosanne Trunk: 253-208-0410**

**RE/MAX**  
NORTHWEST  
Seniors Real Estate Specialist  
**Lisa Dreyer**  
Managing Broker and Parishioner  
**253-381-7683**  
[lisdreyer@remax.net](mailto:lisdreyer@remax.net)



**SUPPORT  
OUR  
ADVERTISERS!**

**Mexico Magico**  
**253-722-5196**  
1128 Broadway Tacoma, WA  
Serving Breakfast 7 AM daily  
[mexmagico.com](http://mexmagico.com)



**JD'S LANDSCAPING SERVICES LLC**  
**FREE ESTIMATES**  
**David Calmo**  
owner & parishioner  
**360.633.0500**



**Providing Care in the Home?**  
Pierce County Family Caregiver Support Program  
**253-798-4600**  
[www.PierceADRC.org](http://www.PierceADRC.org)



**IF YOU LIVE ALONE**  
**MDMedAlert!**™ As Low As **\$19<sup>95</sup>** /mo.  
✓ Ambulance/Police  
✓ Family/Friends  
✓ GPS & Fall Alert  
**CALL NOW! 800.808.9294**  
[md-medalert.com](http://md-medalert.com)



**Kaufers**  
Religious Supplies  
CHURCH SUPPLIES & FURNISHINGS  
CANDLES ✦ BOOKS ✦ BIBLES  
RELIGIOUS GIFTS & DECOR  
STATUARY ✦ JEWELRY ✦ ROSARIES  
SACRAMENTAL & SEASONAL ITEMS  
& SO MUCH MORE!  
5201 4th Avenue South  
Seattle, WA 98108  
(206) 622-3100  
Visit us Online!  
**kaufers.shop**



**RH HK**  
**RUSH HANNULA HARKINS KYLER PLLC**  
PERSONAL INJURY ATTORNEYS  
**Injured? Need help?**  
Contact parish member Vern Harkins  
**253-383-5388**  
[vharkins@rhhk.com](mailto:vharkins@rhhk.com)



**Gaffney FUNERAL HOME**  
[gaffneyfuneralhome.com](http://gaffneyfuneralhome.com)  
1002 S. Yakima Ave. | Tacoma, WA 98405  
253-572-6003



**catholicmatch®**  
Washington  
[CatholicMatch.com/WA](http://CatholicMatch.com/WA)



**DOES YOUR NONPROFIT ORGANIZATION NEED A NEWSLETTER?**  
Engaging, ad-supported print and digital newsletters to reach your community.  
**Visit [lpicommunities.com](http://lpicommunities.com)**



**LET'S GROW YOUR BUSINESS**  
Place Your Ad Here and Support Our Parish!  
**CONTACT ME**  
**Joe Scott**  
[jscott@4LPi.com](mailto:jscott@4LPi.com)  
**(800) 950-9952 x9161**

**Honoring Lives with Trust and Compassion**  
*Where the South Sound comes to remember*  
Call today to learn how we can help make a tribute that lasts forever.  
**MOUNTAIN VIEW FUNERAL HOME • MEMORIAL PARK • CREMATORY**  
Since 1915  
**253-590-4612**




**EST. 2011**  
**RS ROOFSMART**  
★ Nailed it! ★  
  
**Catholic Owned Business**  
**206-487-4877**

**BELLARMINE PREPARATORY SCHOOL** **Life-Changing Education**  
College Prep  
Community  
Servant Leadership  
Faith-Centered  
**Find out what it's like to be a Lion**  
[bellarmineprep.org](http://bellarmineprep.org)




**ADT-Monitored Home Security**  
Get 24-Hour Protection From a Name You Can Trust  
• Burglary • Flood Detection  
• Fire Safety • Carbon Monoxide  
**Authorized Provider | SafeStreets**  
**833-287-3502**

