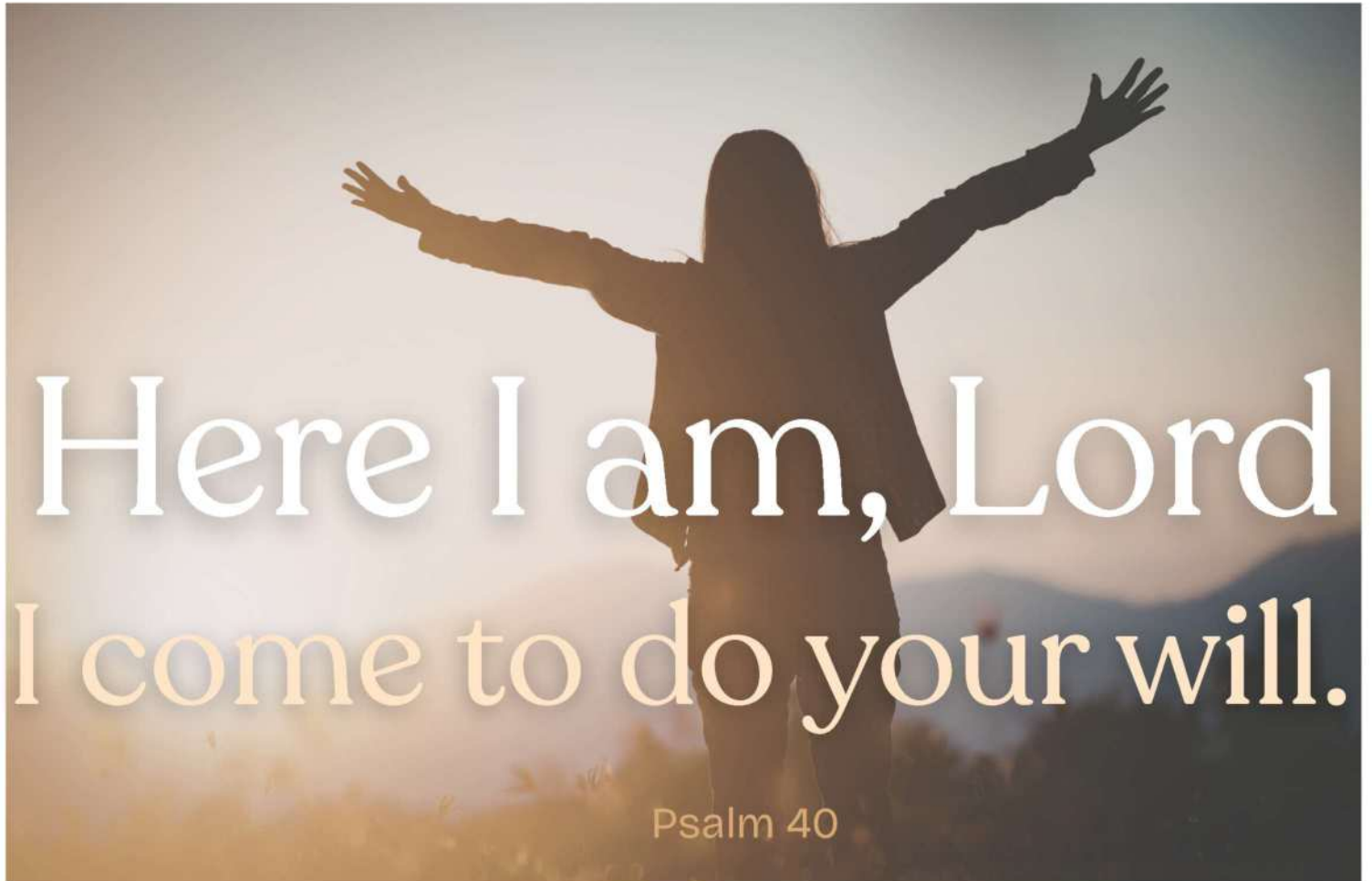


# ST. CHARLES & ST. LEO

## PARISH FAMILY

JANUARY 18, 2026 | 2ND SUNDAY IN ORDINARY TIME



Here I am, Lord  
I come to do your will.

Psalm 40



### ST. CHARLES BORROMEO

CATHOLIC CHURCH

7112 S. 12th Street  
Tacoma, WA 98465  
253-564-5185  
[www.stcharlesb.org](http://www.stcharlesb.org)  
Hours: Monday - Friday 8:30am to 4:30pm



### ST. LEO THE GREAT

CATHOLIC CHURCH

710 S. 13th Street  
Tacoma, WA 98405  
253-272-5136  
[www.stleoparish.org](http://www.stleoparish.org)  
Hours: Tuesday - Friday 9:00am to 5:00pm

## PARISH UPDATES

### SHARE WHAT YOU LOVE ABOUT OUR PARISH!

#### **Appreciation is an essential part of love**

The theologian Josef Pieper describes appreciation as an important first movement in love. Appreciating the goodness in the other prepares us to do the good for the other.

One of our parishioners, Bill Orrange shared an account of what he appreciates so much about his parish, St. Leo. Below is an excerpt:

It was 50 years ago, August 15, 1975, that I arrived in Tacoma from Buffalo, NY to begin my year as a Jesuit Volunteer. I want to share with you some of what I have learned, or I should say I am learning over these years. . . .

It wasn't until shortly after I began my college studies at Syracuse that I began in earnest to develop a social conscience. . . . A friend from college told me about the Jesuit Volunteer Corps. I was placed at St Leo in a city that I had never heard of. I met Marie here at St Leo. We were married in the church and had our reception in what is now the Food Connection.

When I arrived in my Jesuit Volunteer community, I was open to and struck with the social justice endeavors of our parish and felt I had found my "home". I developed close friendships with some of my community of which I am still close friends with today. . . .

As I volunteer with the Jesuit Volunteer EnCorps coffee/sandwich ministry outside the Bix, I'm beginning my journey from seeing the homeless as "those people" to seeing their individual dignity. Fr. Greg Boyle describes the need to erase the lines between who does and who doesn't belong at the Lord's table. This can only happen with love in our hearts.

This St Leo community has helped me see that yes, I am surrounded by love and kindness and it is all a gift. Thank you for continuing to challenge me.

Do you have reflections on your appreciation of our parish, whether that parish is St. Charles or St. Leo? We would like to hear them. If you have reflections you would like to share, please send them to Deacon Eric Paige at [epaige@stleoparish.org](mailto:epaige@stleoparish.org).

Our bulletin space is very scarce, so we don't have nearly enough space to publish everyone's reflection nor the entirety of most reflections. Short reflections of a few sentences are best. However, whatever you share with us will be shared with Fr. Michael and will be truly appreciated.

"I give thanks to my God always on your account for the grace of God bestowed on you in Christ Jesus."  
1 Corinthians 1:4



**Please return your used palms to the church so they may be reverently burned and prepared for Ash Wednesday.**

**Palms can be dropped in the baskets at the church entries.**

## PRAYERS NEEDED!

We are in need of people willing to pray for prayer requests that are received. This is an important ministry that can be done from home at any time. If you would like to be a part of the Prayer Line ministry, please contact Amy Orm at [aorm@stcharlesb.org](mailto:aorm@stcharlesb.org) or call the office at 253-845-5165.

## OFFICE BUILDING BLESSING

Bishop Schuster will be joining St. Charles for the 10am Mass on February 1<sup>st</sup> to bless the new office building. There will be a reception following, with light refreshments and an opportunity to walk through the new building.

## THROAT BLESSING

On February 3<sup>rd</sup>, the Feast of St. Blaise, there will be a blessing of throats following the 9am Mass.

## PARISH MINISTRIES NEEDED

We are looking for various parish ministries to help lead Stations of the Cross at St. Charles during Lent. If your ministry is interested, or would like more details, please contact Candyce: [cochoa@stleoparish.org](mailto:cochoa@stleoparish.org)

## FOOD DONATIONS NEEDED

**Hunger issues in our community are on the rise, and the St. Leo Food Connection Food is running very low on almost all food items.**

We ask that you please give canned goods and other shelf-stable food items to the Food Connection or consider organizing a food drive to help!

For more information, please contact the Food Connection at (253) 383-5048 or text Rick Samyn at (253) 229-4114 at the St. Leo Church Campus.

## OUR STAFF

### PARISH FAMILY CLERGY

**Pastor:** Fr. Michael Radermacher    **Vicar:** Fr. Marc Powell    **Deacon:** Tom O'Loughlin    **Deacon:** Jim Nazzal

### PARISH FAMILY STAFF

#### Director of Pastoral Ministries

Deacon Eric Paige  
[epaige@stleoparish.org](mailto:epaige@stleoparish.org)

#### Pastoral Associate for Faith Formation

Amy Orm  
[aorm@family35.org](mailto:aorm@family35.org)

#### Pastoral Assistants:

##### Weddings, Funerals & Liturgy (SLG)

Marianne Manning  
[mmanning@stleoparish.org](mailto:mmanning@stleoparish.org)

##### Adult Confirmation, Becoming Catholic, Young Adult Fellowship & Liturgy (SCB)

Candyce Ochoa  
[cochoa@stleoparish.org](mailto:cochoa@stleoparish.org)

##### Hispanic Ministries, Bautismo, Sacramental Prep & Faith Formation

Abby Diaz  
[faithformation@stleoparish.org](mailto:faithformation@stleoparish.org)

#### Director of Operations

Shanon Koenen  
[skoenen@stleoparish.org](mailto:skoenen@stleoparish.org)

#### Outreach Liaison & Sacramental Records

Cathy Lamet  
[clamet@family35.org](mailto:clamet@family35.org)

#### Social Ministries

Rick Samyn  
[socialministry@stleoparish.org](mailto:socialministry@stleoparish.org)

#### Food Connection Director

Dawn Whitman  
[dawnw@foodconnection.org](mailto:dawnw@foodconnection.org)

#### Music

Jina Darnell  
[jdarnell@stleoparish.org](mailto:jdarnell@stleoparish.org)

#### Pastoral Support

Andrew Lam  
[alam@stleoparish.org](mailto:alam@stleoparish.org)

#### Parish Registrations, Websites, Social Media

Angelie Ashford-White  
[aashford-white@stleoparish.org](mailto:aashford-white@stleoparish.org)

#### Calendar & Facilities Use

Molly Carey  
[mcarey@family35.org](mailto:mcarey@family35.org)

#### Safe Environment & Homebound Ministry

Lynda Sanschulte  
[lsanschulte@stleoparish.org](mailto:lsanschulte@stleoparish.org)

#### Bookkeeper - SCB

Mary Derouin  
[mderouin@family35.org](mailto:mderouin@family35.org)

#### Bookkeeper - SLG

Judith Lamptey  
[jlampzey@stleoparish.org](mailto:jlampzey@stleoparish.org)

#### Facilities & Maintenance

Andrew Rousseau  
[arousseau@stleoparish.org](mailto:arousseau@stleoparish.org)



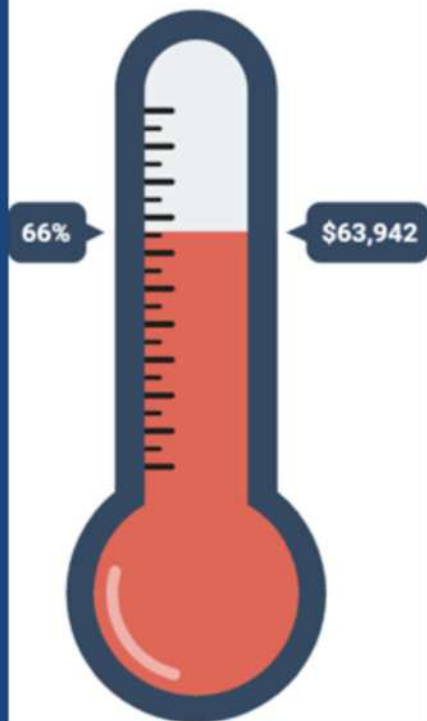
## HAPPENING THIS WEEK

Sunday	Monday	Tuesday	Wednesday
18	19	20	21
Spiritual Adoption Kick-Off 8:00am Mass 10:00am Mass/Mass 10:00am St. Leo: Jovenes; First Communion Prep 11:15 St. Charles Faith Formation 11:15 SVdP Spiritual Formation 12:30pm Mass	9:00am Mass 9:30am Rosary 7:00pm Bible Study	9:00am Mass 9:30am Rosary 12:10pm Mass 6:30pm Teen Confirmation 7:00pm Honduras Monthly Meeting	9:00am Mass 9:30am Rosary 9:30am Bible Study 6:00pm Becoming Catholic
Thursday	Friday	Saturday	Sunday
22	23	24	25
9:00am Mass 9:30am Rosary 12:10am Mass 1:00pm Prayer Group	9:00am Mass 9:30am Rosary 9:30am to 4:00pm Adoration 12:10pm Mass 1:00pm Lectio Divina	Youth Confirmation Retreat 3:00pm Confessions 4:00pm Confessions 5:00pm Mass/Mass	8:00am Mass 10:00am Mass/Mass 11:00am School Open House 12:30pm Mass 1:30pm Native American Mass

Events in blue are located at St. Charles

Events in red are located at St. Leo

GOAL: \$97,116



## St. Leo Parish

### Help us meet our 2025 Annual Catholic Appeal goal!

Thank you to all who have responded to the needs of our regional Church by supporting the 2025 Annual Catholic Appeal! Our journey as Catholics is not undertaken alone. We are all a part of this one body of Christ and your generosity speaks to the impact that our community can have. Whether it is supporting parish staff through centralized services, supporting seminarian formation and education, or uplifting youth and young adult programs and events, your generosity matters.

Our parish is projected to be short of our 2025 Annual Catholic Appeal goal. **At the end of the 2025 Annual Catholic Appeal campaign, it is projected that our parish will be at 66% of our goal. We will have a projected shortfall of \$33,174.00.** If you have not yet contributed or if you already have contributed and want to help us reach our parish goal, there is still time! You can donate using the QR code or go online to [archseattle.org/GiveACA](https://archseattle.org/GiveACA).





## DAILY READINGS

### WEEK OF JANUARY 18

#### Monday

1 Sm 15:16-23; Mk 2:18-22

#### Tuesday

1 Sm 16:1-13; Mk 2:23-28

#### Wednesday

1 Sm 17:32-33, 37, 40-51;  
Mk 3:1-6

#### Thursday

1 Sm 18:6-9; 19:1-7; Mk 3:7-12

#### Friday

1 Sm 24:3-21; Mk 3:13-19

#### Saturday

2 Sm 1:1-4, 11-12, 19, 23-27;  
Mk 3:20-21

## PLEASE PRAY FOR OUR PARISHIONERS

### THOSE WHO ARE SICK OR HOMEBOUND

David Warren	Betty McDonald
Gary Knudson	Kathy Carlson
Kathy Minke	Kevin Darnell
Donna Jerome	Betsy Tustison
Cathy Lamet	Jim Day
Gary Miller	Anna Frederick

### PRAY FOR THE ETERNAL REST OF THOSE WHO HAVE DIED

Christine Cotton  
Josie Stortini  
Joe Ferluga  
Catherine Gray  
Joan Barnowe  
Thadeus Barnowe  
Jim Day



# BREAKING BREAD™

WITH READINGS AND DAILY MASS PROPER

## 2026

## ST. LEO THE GREAT

### BREAKING BREAD BOOK 2026

**Breaking Bread Books will be  
located on a cart in the  
vestibule, please grab one on  
your way in and replace it on  
the cart after mass starting  
January 11, 2026.**



## HONDURAS MISSION TRIP

We are on our way! The Honduras Mission Group will be in Honduras January 24th through the 31st. We would appreciate your prayers for us during that time to be witnesses to Christ's love in the manner in which we serve the people of the mountain villages: that we respect their cultural norms, listen to their concerns with open and compassionate hearts, provide medical care to each person to the best of our ability, to provide clothing and shoes to each individual in need, to successfully treat a medical emergency that occurs at a village, and that we remain safe and healthy during our trip.

Last year we treated two emergency situations: 1) a youngster with a fractured arm near the elbow came to us at the end of the day as we were packing to leave, and 2) a young boy with an infected foot wound was carried in by his father. His foot had gotten caught in the motorcycle chain just days before. The financial and spiritual support this community has given us preparing for the mission has been greatly appreciated. Thank you St. Charles folks and God bless you, too. We intend to share a few facts and maybe story or two once we return. A presentation of our trip is scheduled for the March 6th Senior Luncheon.



## JV EnCorps

A PROGRAM OF JVC NORTHWEST

Jesuit Volunteer (JV) EnCorps, a program of JVC Northwest, engages people 40+ in a rewarding experience of service, community, and spiritual formation. JV EnCorps Members (JVEs) commit to 10 months of part-time service in their local communities and to the exploration of JVC Northwest's core values: community, simple living, social and ecological justice, and spirituality/reflection.



### JV ENCORPS IMPACT IN TACOMA, WA - '24-25

**18** JV EnCorps members  
10,300 people at 34 agencies served by Tacoma JV EnCorps Members

**5150** hours served

\$172,473.50 financial value of service  
calculated using \$33.40/hr from Independent Sector, April 2024



### Standing Firm at the Margins

"We have a laundry service started by a couple of JV EnCorps members, so we have a few donated washers and dryers now for people in the community to drop off their clothes," Paula Olson, co-leader of JV EnCorps in Tacoma, WA shared.

The program is fully led and run by the JV EnCorps members. For those living on the streets, access to laundry is often out of reach. But it's not just about clothes; it's about being seen. This service provided by JV EnCorps members says: you matter, you deserve clean clothes, and you are not forgotten.

Interested in growing this movement in Tacoma?  
Let us know here >>>>  
Learn more at [jvencorps.org](http://jvencorps.org).



## ANOINTING OF THE SICK

Contrary to belief, an anointing is not just for those who are actively dying. One can receive an anointing if they are severely ill, are about to have surgery, are actively dying or any other emergency circumstances. Although we know that it is not always possible to give ample notice for an anointing, if possible we ask to not wait until the last minute so we can ensure priests are able to make it in time.

If you or your family member have been Baptized Catholic, and are in need of an anointing please call the office at 253-564-5185. If you are in need of an anointing for someone who is actively dying (outside office hours), please call the emergency line at 253-564-5185. and press 3.

Attending Saturday or Sunday Mass and need an anointing? No problem. Fr. Michael and Fr. Marc welcome you to be anointed after any Mass! Just stand/sit by the Baptismal font and they will meet you after Mass.

## OUTREACH THROUGH PRAYER

To submit prayer requests for the St. Charles Prayer Line, call 253-564-5185 or email [prayerline@stcharlesb.org](mailto:prayerline@stcharlesb.org).

If you have a prayer intention for the sick to be read during the Prayers of the Faithful at weekend Masses, call the Parish Office, at 253-564-5185.

This must be requested by an immediate family member.

If you would like to request a Mass Intention for a daily Mass, call or visit the Parish Office.

***"Where two or more are gathered in my name, there am I among them."***

***– Matthew 18:20***

## FEED THE HUNGRY

*Sandwich Ministry*



"For I was hungry and you gave me food, I was thirsty and you gave me drink, a stranger and you welcomed me, in prison and you visited me."  
Matthew 25: 35-36

**Help Us Make Sandwiches: Mondays, 9-11 AM**

**Help Us Serve Sandwiches:**

**Monday-Friday, 9 AM-Noon or Noon-3 PM**

**St. Leo Bischsel Hall**

**Sign up with Jerry Schumacher 253 838-3854**



## SOCIAL SERVICES/JUSTICE - ST. LEO CAMPUS

### St Leo Supportive Social Service Program – December 2025 Budget Report

Rental Assistance: \$ 7,609.44	Auto: \$ 796.35
Utility Assistance: \$ 922.41	DOH: \$150.00
Transit: \$ 215.00	Home related cost: \$65.00
Home (Storage): \$ 250.00	Medical: \$741.00
Dept. Of Licensing: \$150.00	
December Total Expense: \$ 10,844.20	

December Program Income for Soc Support: \$ 13,579.06

December Monthly Balance for Social Support: \$2,734.8

Account balance for the Social Supportive Services program as of December 31, 2025, was: \$77,560.00 We are setting the budget for January at: \$9,000.00. We will be good stewards of our resources in the best way possible, but compassion is the rule. St. Leo Staff and our dedicated Volunteers will continue to assist individuals and families in need to the best of our abilities, mindful of good stewardship of your generous and gracious support. THANK YOU

#### Campus Ministry Updates:

Sandwich Ministry – A Bite to Eat, Coffee to Sip & Served with Plenty of Kindness!

Since the unfortunate ending of CCS hot-meal services to those living on the streets last summer, parishioners have stepped up to help! This ministry is amazing, showing love and hospitality to our neighbors who are homeless or must spend their days on the streets.

The Sandwich Ministry is entirely supported by parishioners both through in-kind donations and financial assistance. This is also true for the following ministries: Clothing Boutique, St. Leo Supportive Services and the L'Honey Beekeeping Project. These ministries are NOT line-item budgets items coming from the general fund of the parish. Moreover, these ministries give concrete examples as to how the Gospel of Jesus is truly good news to those in need and God's Creation!

#### Let's highlight one of the newest ministries – Sandwiches with Hospitality!

We have served over twelve thousand lunches (12,000) lunches containing fifteen thousand (15,000) sandwiches, protein or granola bars, a piece of fruit and a dessert. We offer hard boiled eggs and holiday candies and treats. The hot beverages include coffee, cocoa, and tea.

The cost of this ministry is covered mostly by in-kind donations. The coffee, sandwich bread, luncheon meat, cheese, peanut butter, jelly, oranges, teas and desserts are primarily donated by individuals and families. The costs of these goods are over \$21,800. From September 2 through December 16, the cash donations to the Sandwich Ministry activity were \$4,480 and disbursements for purchased items were \$2,662. All together the ministry has been supported with cash and in-kind donations of more than \$26,000.

For more information or concerns: Contact Jerry Schumacher at: (253) 838-3854

Rick Samyn via TEXT: 253 229-4114

"I slept and dreamt that life was joy. I awoke and saw that life was service. I acted and behold, service was joy."  
Rabindranath Tagore



## ARCHDIOCES ANNUAL IMPACT REPORT

The 2024-2025 Annual Impact Report is here!

Read about the Archdiocese of Seattle's impact over the last year.

Read the report at:

<https://online.nextflipbook.com/dpui/3i3l/>

# JOIN US NOW TO SPIRITUALLY ADOPT A BABY IN DANGER OF ABORTION



**THE DAILY PRAYER**  
 "Jesus, Mary & Joseph,  
 I love you very much.  
 I beg you to spare the life of  
 [baby's name], the unborn baby  
 that I have spiritually adopted  
 who is in danger  
 of abortion."  
 - Prayer of Ven. Archbishop  
 Fulton J. Sheen

**PRAY EVERY DAY**  
 Pray for nine months for a mother & her unborn baby.

**CHOOSE A NAME**  
 While the child will remain unknown to you,  
 choosing a name for the unborn baby  
 may help you when praying for baby and mother.

**PRAYER IS POWERFUL**  
 Your prayers can make a difference  
 between life and death for a child in the womb.

WITH GRATITUDE FOR THE GENEROSITY OF THE KNIGHTS OF COLUMBUS

## JOIN THE SPIRITUAL ADOPTION PRAYER MINISTRY IN 2026!

Our 2026 Spiritual Adoption Prayer campaign kicks-off this weekend!

Take home a prayer card after Mass, write a baby's name on the back of the card as a way to help focus your prayer, and then pray, every day, for a child, Mom and family to be spared from abortion. You can also add your selected baby name to a small paper heart available at all church entrances/exits during this weekend and next.

On the third weekend of each month, we will display a "Developmental Milestones Poster" and our "Babies' Names Poster" in the church.

Your prayers are powerful! Please commit to pray, fast and act to save at least one life from the tragedy of abortion. Thank you!

## DAY OF PRAYER

Pray & Act - January 22 - "Day of Prayer for the Legal Protection of Unborn Children"

This day of prayer was originally declared to coincide with the anniversary of the 1973 Roe v Wade supreme court decision to legalize abortion in the U.S. It continues as a remembrance and as a reminder to pray that hearts & minds will value the dignity of every human life and to encourage laws that protect unborn children, especially in WA State.

Today, women in our own communities are pregnant, poor, perhaps without a home, and in great need. They may feel alone, scared, and overwhelmed, not knowing where they can turn for help.

On January 22, please plan to attend Mass or pray the rosary or make a donation of time, talent or treasure to a local Pregnancy Resource Organization. (see below)

## ENGAGE WITH LEGISLATORS

Stay informed and contact your legislators (even if you disagree with them!) as they vote on potential laws this session. Register to "Be an advocate" and stay informed with the Washington State Catholic Conference. [www.wacatholics.org/be-an-advocate/join-our-network](http://www.wacatholics.org/be-an-advocate/join-our-network)

## LOCAL PREGNANCY RESOURCES

Please help women, men and families find life-affirming Pregnancy and Parenting Resources. (Add these to your phone or print & carry in your wallet/purse)

- St. Charles' Gabriel Project – Karol @ 253-307-8542
- Pregnancy Aid of Tacoma – 253-383-4100 or facebook @ "Pregnancy&Family AID "Pierce & Outskirts" or [pregnancyaidwa.org](http://pregnancyaidwa.org)
- Our Lady of Guadalupe Maternity Center – 253-582-3384. Located in Lakewood. Open Mondays and Fridays, 10am-12noon.
- PREPARES of Western WA – 206-737-9264 or <http://preparesforlife.org>





# Being a Neighbor

INTERFAITH PERSPECTIVES & DIALOGUE

***The Rev. Mr. Fred Rogers was well known for many things and most particularly for the phrase, "Won't you be my neighbor?"***

Join us as we gather to hear from speakers from three faith communities in Tacoma. Representatives from Temple Beth El, the Islamic Center of Tacoma, and St. Mark's Lutheran will share from their traditions on what it means to be a neighbor.

Drawing from scripture and tradition, we will hear about and share among each other what neighborliness looks like among interfaith friends in the streets of Tacoma.

Questions of unity, solidarity, hospitality, and identity have never been more important among these cousins of faith. This evening is a chance to learn what religious visions inspire such attitudes - and a chance to put them into practice!

*Come and be a part of faith in the neighborhood.*

## **PANELISTS**

- Islamic Center of Tacoma - Aulla Elhassan
- Temple Beth El - Val Carlin
- St. Mark's Lutheran by the Narrows - AJ Block

**Monday, January 26  
7:00 - 9:00 pm**

**Bethany Presbyterian Church  
4420 N. 41st Street, Tacoma**

**Please register  
by scanning the  
QR code or using the  
link at the bottom  
of the page**



## **Questions?**

Contact Sandy Windley at  
[sandyw@associatedministries.org](mailto:sandyw@associatedministries.org)

**am** ASSOCIATED  
MINISTRIES

<https://wl.donorperfect.net/weblink/weblink.aspx?name=assocmin&id=211>



# ST. CHARLES BORRAMEO SCHOOL

THE ANNUAL

## SPAGHETTI FEED & BINGO NIGHT



**JANUARY 31ST, 6PM-8:30PM**

Join us in Feist Hall on Saturday, January 31st for our Annual Spaghetti Feed and Bingo Night to support the Join the Journey; Shape the Future Annual Fund. Come enjoy a pasta feast, play bingo, and win some wonderful prizes!

Dinner includes pasta, meatballs, salad, and dessert!

Beer and wine is included for adults.

Concessions will be available for purchase at the event. (cash only)

**FAMILY ADMISSIONS TICKET, 2 ADULTS, 1 CHILD - \$50**

**FAMILY ADMISSIONS TICKET - 2 ADULTS, 2+ CHILDREN- \$60**

**ADULT ADMISSIONS TICKET- \$20**

**STUDENT ADMISSIONS TICKET - \$10**

**FIVE BINGO CARDS- \$8**

**TEN BINGO CARDS- \$15**

**BINGO DAUBER- \$3**

Raffle Tickets will be available for purchase at the event for \$5.

RSVP by January 28th! Please return order forms to the St. Charles Borromeo Advancement Office.

**FAMILY NAME:** \_\_\_\_\_

**# OF ADULTS:** \_\_\_\_\_

**# OF STUDENTS:** \_\_\_\_\_

**# OF BINGO CARDS:** \_\_\_\_\_

**# OF BINGO DAUBERS:** \_\_\_\_\_

**TOTAL (\$):** \_\_\_\_\_

**EMAIL:** \_\_\_\_\_

**PHONE NUMBER:** \_\_\_\_\_

Purchase tickets here!



**PAYMENT TYPE:**

☐

Cash

☐

Check

Card (please scan QR code above)





**Gaffney**  
FUNERAL HOME

[gaffneyfuneralhome.com](http://gaffneyfuneralhome.com)

1002 S. Yakima Ave. | Tacoma, WA 98405 253-572-6003

*Bookkeeping With Sam*

Taxes  
Individual and Business  
Any Accounting

[bookkeepingwithsam@outlook.com](mailto:bookkeepingwithsam@outlook.com)  
253-655-7631

**catholicmatch®**  
Washington



[CatholicMatch.com/WA](http://CatholicMatch.com/WA)

**THE Wonderful Counselor**

— Book FREE call at: —  
[narrowscounseling.com](http://narrowscounseling.com)



**FREE  
AD DESIGN**

with purchase  
of this space

**CALL**  
800-950-9952

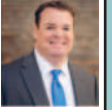
**WE APPRECIATE OUR  
ADVERTISERS!**

They allow us to print  
this bulletin. Thank you!

**RUSH HANNULA  
HARKINS KYLER**  
PERSONAL INJURY ATTORNEYS

**John Wilson, Parish Member**  
253-383-5388 | [jwilson@rhhk.com](mailto:jwilson@rhhk.com)

Questions about  
an accident?  
Contact:



**Honoring Lives with  
Trust and Compassion**

*Where the South Sound comes to remember*

Call today to learn how we  
can help make a tribute  
that lasts *forever.*

SCAN TO  
LEARN MORE



**MOUNTAIN VIEW**  
FUNERAL HOME • MEMORIAL PARK • CREMATORY  
Since 1915

**253-590-4612**



**FREE ESTIMATES**  
**David Calmo**  
owner &  
parishioner

**360.633.0500**



**SUPPORT  
OUR PARISH**

**ADT-Monitored Home Security**

Get 24-Hour Protection From a Name You Can Trust

- Burglary
- Fire Safety
- Flood Detection
- Carbon Monoxide



**SafeStreets**

**833-287-3502**

**SHORT STAFFED?**

Place an ad here to find new  
local talent for your business.



**CALL 800-950-9952**

**LET'S GROW YOUR BUSINESS**

Place Your Ad Here  
and Support Our Parish!

**CONTACT ME**  
**Julie Blissett**

[jblissett@4LPi.com](mailto:jblissett@4LPi.com)  
(800) 950-9952 x2156

**Hiring Event!**

**Inside Sales Executives**

Thursday, October 16th  
9 AM - 4:30 PM  
Belltown Centre, 4200 6th Ave SE  
Suite 304. Lacey, WA

Launch Your Sales Career With LPi!



Scan for  
more info!



**SUPPORT OUR ADVERTISERS!**

**Place Your Ad Here and  
Support our Parish!**

Instantly create and  
purchase an ad with

**AD CREATOR STUDIO**



[4lpi.com/adcreator](http://4lpi.com/adcreator)

**WE APPRECIATE OUR  
ADVERTISERS!**

**DOES YOUR NONPROFIT  
ORGANIZATION NEED  
A NEWSLETTER?**

Engaging, ad-supported  
print and digital newsletters  
to reach your community.

[Visit lpicomunities.com](http://Visit lpicomunities.com)

**OUR COMMUNITY  
NEWSLETTER**  
OCTOBER EDITION



Scan to  
contact us!



For ad info. call 1-800-950-9952 • [www.4lpi.com](http://www.4lpi.com)

St. Charles and St. Leo, Tacoma, WA

05-0835





## RUSH HANNULA HARKINS KYLER, PLLC

PERSONAL INJURY ATTORNEYS  
*Injured? Need help?*

Contact parish member Vern Harkins  
253-383-5388  
vharkins@rhhk.com

PLLC



SUPPORT  
OUR PARISH

# ACME ROOFING

Pursuing the  
Highest Quality  
Steve Keller 253-564-2292



## ALL SEASONS

HEATING & CLIMATE CONTROL

GREAT SAME DAY SERVICE!  
HEATING & AIR CONDITIONING INSTALLATION & REPAIR  
(253) 565-2942 | ALLSEASONSHEATINGAC.COM



## SHORT STAFFED?

Place an ad here to find new  
local talent for your business



CALL 800-950-9952



**FP**  
FARRELL'S PIZZA

POINT RUSTON • UNION & 6TH AVE

LIFE ON  
*Your*  
TERMS

**cogir**  
THE NARROWS  
SENIOR LIVING

Offering Independent Living, Assisted  
Living & Memory Care

CALL TODAY FOR MORE INFORMATION  
(253) 252-5181

CogirattheNarrows.com



(253) 226-6201

Parishioners:  
Jaime Holguin  
Sylvia Holguin

jsroofs.com



## Lighthouse Laundry

Get Ready for Camping! Wash and dry your SLEEPING BAG IN OUR HUGE WASHERS

Pay with your Phone • Open 8am-8pm

Matthew 5:16: So let your light shine...

www.lighthouselaundry.biz 5738 N 26th St. • Tacoma, WA



3211 Ruston Way • Tacoma, WA.  
(253) 756-0771  
katiedowns.com

## FLOOR COVERING EXPRESS

More than just flooring...

• Countertops • Tile • Hardwood •

Pete & Jeanine  
Kneeland

Parishioners

(253) 566-6880

3143 Bridgeport Way W  
University Place, WA 98466



## Tacoma

PEDIATRIC DENTISTRY

Aarika D. Anderson Elter, DMD  
Board Certified Pediatric Dentist

253.238.1402 | Old Town Tacoma | www.TacomaPediatricDentistry.com

## MR WATER PLUMBING SERVICES LLC

Specializes in Bathroom Remodeling,  
Re-piping, Water Heaters and  
Residential Plumbing

**\$75 OFF any repair**

Alexander Almonte • 253-507-3129  
Parishioner License #MRWATWP759K9



EST. 2011  
**HS**  
ROOFSMART  
★ Nailed it! ★



Catholic Owned  
Business  
206-487-4877



**FREE  
AD DESIGN**

with purchase  
of this space

CALL  
800-950-9952

## 2026 Catholic Calendar

Fill every month  
with faith!

Order Yours Today! ➔



## Kaufers

Religious Supplies

CHURCH SUPPLIES & FURNISHINGS  
CANDLES ✦ BOOKS ✦ BIBLES  
RELIGIOUS GIFTS & DECOR  
STATUARY ✦ JEWELRY ✦ ROSARIES  
SACRAMENTAL & SEASONAL ITEMS

5201 4th Avenue South  
Seattle, WA 98108  
(206) 622-3100

kaufers.shop

## NEVER MISS OUR BULLETIN!

SUBSCRIBE

Have our bulletin emailed  
to you every week.

Visit [www.parishesonline.com](http://www.parishesonline.com)



For ad info. call 1-800-950-9952 • [www.4lpi.com](http://www.4lpi.com)

St. Charles and St. Leo, Tacoma, WA

05-0835